

EN-1B RRFQ INFORMATION SHEET - Procurement Level Parts

MODEL:	B6
PART NAME:	PANEL COMP,SIDE SILL INNER,R
PART NUMBER:	61310-68P00/P10

Date:	04-Feb-13
Prepared By	S Siva Selva Narayanan

61310-68P00

Level	Part No.	Part Name	Procurement Level (P/C)	QTY	Local/ KD	Common/ Uncommon	MSIL/SUPPLIER Tooling	Supplier Tooling Type	Material	Thickness (mm)	Design Weight (gms)	No. of Weld Spots	CO2 Weld Length (mm)	CDR FILE
1	61310-68P00	PANEL COMP,SIDE SILL INNER,R	P	1	LOCAL	UNCOMMON	-	-	-	-	3020.18	11	NA	U050142-61310-68P00-130123/000.001
2	61311-68P00	PANEL,SIDE SILL INNER,R	C	1	LOCAL	UNCOMMON	MSIL - Critical	-	JAC440WN-45/45	1	2601.79			Refer above data.
3	09119-05018	BOLT,FLOOR UNDER COVER	C	4	LOCAL	COMMON	-	-	-	-	1.63			-
3	09146-11002	NUT,FR SEAT BELT	C	1	LOCAL	COMMON	-	-	-	-	18.20			-
2	61315-68P00	REINF,JACKING FRONT	C	1	LOCAL	UNCOMMON	SUPPLIER	-	JAC270CN-45/45	2	57.75			Refer above data.
2	61312-79J00	BRACKET,SEAT BELT RETRACTOR	C	1	LOCAL	COMMON	SUPPLIER	-	JSH270CN-P	1.4	114.00			Refer above data.
3	09146-11002	NUT,SEAT BELT RETRACTOR	C	1	LOCAL	COMMON	-	-	-	-	18.20			-
2	61317-68P00	EXTENSION,SIDE SILL FR,R	C	1	LOCAL	UNCOMMON	SUPPLIER	Casting	JAC440WN-45/45	1	201.21			Refer above data.
3	08315-11069	NUT,FENDER	C	1	LOCAL	COMMON	-	-	-	-	2.50			-

61310-68P10

Level	Part No.	Part Name	Procurement Level (P/C)	QTY	Local/ KD	Common/ Uncommon	MSIL/SUPPLIER Tooling	Supplier Tooling Type	Material	Thickness (mm)	Design Weight (gms)	No. of Weld Spots	CO2 Weld Length (mm)	CDR FILE
1	61310-68P10	PANEL COMP,SIDE SILL INNER,R	P	1	LOCAL	UNCOMMON	-	-	-	-	3227.06	31	NA	U050142-61310-68P00-130123/000.001
2	61311-68P10	PANEL,SIDE SILL INNER,R	C	1	LOCAL	UNCOMMON	MSIL - Critical	-	JAC980YN-45/45	1	2601.79			Refer above data.
3	09119-05018	BOLT,FLOOR UNDER COVER	C	4	LOCAL	COMMON	-	-	-	-	1.63			-
3	09146-11002	NUT,FR SEAT BELT	C	1	LOCAL	COMMON	-	-	-	-	18.20			-
2	61314-68P00	BRACE,SIDE SILL INNER	C	5	LOCAL	UNCOMMON	SUPPLIER	Progressive / Normal type	JAC440WN-45/45	0.8	41.38			Refer above data.
2	61315-68P00	REINF,JACKING FRONT	C	1	LOCAL	UNCOMMON	SUPPLIER	-	JAC270CN-45/45	2	57.75			Refer above data.
2	61312-79J00	BRACKET,SEAT BELT RETRACTOR	C	1	LOCAL	COMMON	SUPPLIER	-	JSH270CN-P	1.4	114.00			Refer above data.
3	09146-11002	NUT,SEAT BELT RETRACTOR	C	1	LOCAL	COMMON	-	-	-	-	18.20			-
2	61317-68P00	EXTENSION,SIDE SILL FR,R	C	1	LOCAL	UNCOMMON	SUPPLIER	Casting	JAC440WN-45/45	1	201.21			Refer above data.
3	08315-11069	NUT,FENDER	C	1	LOCAL	COMMON	-	-	-	-	2.50			-

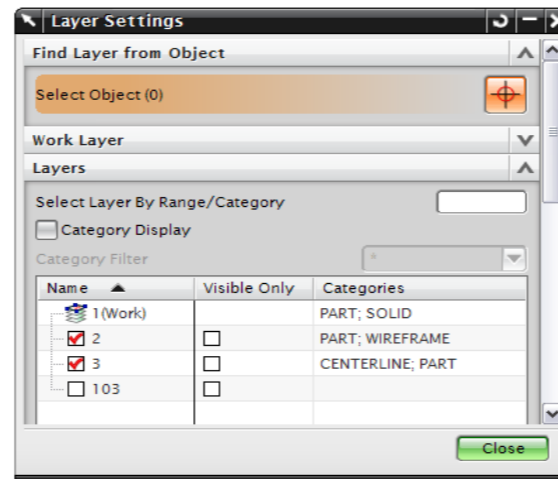
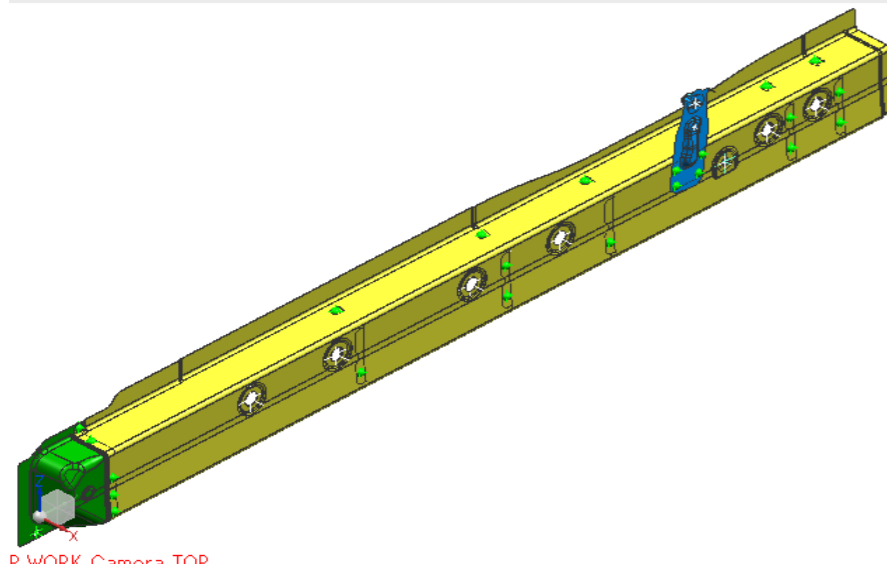
Image:

Number	Revision	Name	Description	M.	P.	File Descr...	Units	Weig...	Weight (g)	Weight (kg)	W
Sections											
U050142-61310-68P00-130123	000.001	PANEL COMP,SIDE SILL INNER,R	PANEL CO...				mm				
U045919-85-61315-130115	000.001	REINF,JACKING FRONT	U045919...				mm				
U045919-85-61317-130110	000.001	EXTENSION,SIDE SILL INNER FR,R	EXTENSIO...				mm				
U045919-85-61311-WB2-130110	000.002	PANEL,SIDE SILL INNER,R	PANEL,SID...				mm				
U045919-85-61314-121101 x 5	004.002	BRACE,SIDE SILL INNER	BRACE,SID...				mm				
61312-79J00A	002	BRACKET,SEAT BELT RETRACTOR	2004/05/...				mm				
U045919-85-61310-WELD-02-121...	004.003	SPOT	U044334...				mm				

DRAWING FOR QUOTATION

Note:

1. Refer CAD data for other details. The Data is common for both variants 68P00 & 68P10. Consider the Child parts and Welding in the CAD data, as per above Part list.
2. For Brace, Side sill Inner 61314-68P00, Estimation is requested for both tool types of Progressive & Normal.



P WORK Camera TOP

EN-1B RRFQ INFORMATION SHEET - Procurement Level Parts

MODEL:	B6
PART NAME:	PANEL COMP,SIDE SILL INNER,L
PART NUMBER:	61320-68P00/P10

Date:	04-Feb-13
Prepared By	S Siva Selva Narayanan

61320-68P00

Level	Part No.	Part Name	Procurement Level (P/C)	QTY	Local/ KD	Common/ Uncommon	MSIL/SUPPLIER Tooling	Supplier Tooling Type	Material	Thickness (mm)	Design Weight (gms)	No. of Weld Spots	CO2 Weld Length (mm)	CDR FILE
1	61320-68P00	PANEL COMP,SIDE SILL INNER,L	P	1	LOCAL	UNCOMMON	-	-	-	-	3020.18	11	NA	U050142-61320-68P00-130123/000.001
2	61315-68P00	REINF,JACKING FRONT	C	1	LOCAL	UNCOMMON	-	-	JAC270CN-45/45	2	57.75			Refer above data.
2	61321-68P00	PANEL,SIDE SILL INNER,L	C	1	LOCAL	UNCOMMON	MSIL - Critical	-	JAC440WN-45/45	1	2601.79			Refer above data.
3	09119-05018	BOLT,FLOOR UNDER COVER	C	4	LOCAL	COMMON	-	-	-	-	1.63			-
3	09146-11002	NUT,FR SEAT BELT	C	1	LOCAL	COMMON	-	-	-	-	18.20			-
2	61312-79J00	BRACKET,SEAT BELT RETRACTOR	C	1	LOCAL	COMMON	SUPPLIER	-	JSH270CN-P	1.4	114.00			Refer above data.
3	09146-11002	NUT,SEAT BELT RETRACTOR	C	1	LOCAL	COMMON	-	-	-	-	18.20			-
2	61327-68P00	EXTENSION,SIDE SILL FRL	C	1	LOCAL	UNCOMMON	SUPPLIER	Casting	JAC440WN-45/45	1	201.21			Refer above data.
3	08315-11069	NUT,FENDER	C	1	LOCAL	COMMON	-	-	-	-	2.50			-

61320-68P10

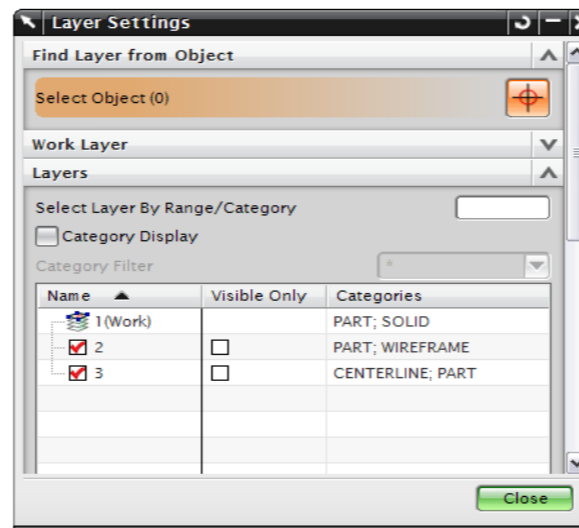
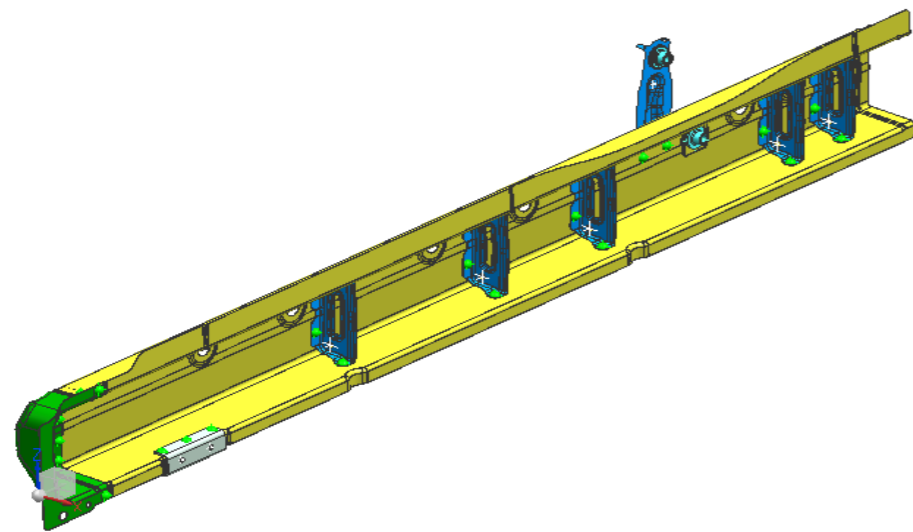
Level	Part No.	Part Name	Procurement Level (P/C)	QTY	Local/ KD	Common/ Uncommon	MSIL/SUPPLIER Tooling	Supplier Tooling Type	Material	Thickness (mm)	Design Weight (gms)	No. of Weld Spots	CO2 Weld Length (mm)	CDR FILE
1	61320-68P10	PANEL COMP,SIDE SILL INNER,L	P	1	LOCAL	UNCOMMON	-	-	-	-	3227.06	31	NA	U050142-61310-68P00-130123/000.001
2	61315-68P00	REINF,JACKING FRONT	C	1	LOCAL	UNCOMMON	-	-	JAC270CN-45/45	2	57.75			Refer above data.
2	61321-68P10	PANEL,SIDE SILL INNER,L	C	1	LOCAL	UNCOMMON	MSIL - Critical	-	JAC980YN-45/45	1	2601.79			Refer above data.
3	09119-05018	BOLT,FLOOR UNDER COVER	C	4	LOCAL	COMMON	-	-	-	-	1.63			-
3	09146-11002	NUT,FR SEAT BELT	C	1	LOCAL	COMMON	-	Progressive / Normal type	-	-	18.20			-
2	61312-79J00	BRACKET,SEAT BELT RETRACTOR	C	1	LOCAL	COMMON	SUPPLIER	-	JSH270CN-P	1.4	114.00			Refer above data.
3	09146-11002	NUT,SEAT BELT RETRACTOR	C	1	LOCAL	COMMON	-	-	-	-	18.20			-
2	61327-68P00	EXTENSION,SIDE SILL FRL	C	1	LOCAL	UNCOMMON	SUPPLIER	-	JAC440WN-45/45	1	201.21			Refer above data.
3	08315-11069	NUT,FENDER	C	1	LOCAL	COMMON	-	Casting	-	-	2.50			-
2	61314-68P00	BRACE,SIDE SILL INNER	C	5	LOCAL	UNCOMMON	SUPPLIER	-	JAC440WN-45/45	0.8	41.38			Refer above data.

Image:

Number	Revision	Name	Description	M.	P.	File Descr...	Units	Weig...	Weight (g)	Weight (kg)
Sections										
U050142-61320-68P00-130123	000.001	PANEL COMP,SIDE SILL INNER,L	PANEL CO...				mm			
U045919-B5-61315-130115	000.001	REINF,JACKING FRONT	U045919-...				mm			
U045919-B5-61327-130115	000.001	EXTENSION,SIDE SILL INNER FRL	U045919-...				mm			
U045919-B5-61321-WB2-130115	000.002	PANEL,SIDE SILL INNER,L	U045919-...				mm			
U045919-B5-61314-121101 x 5	004.002	BRACE,SIDE SILL INNER	BRACE,SID...				mm			
61312-79J00A	002	BRACKET,SEAT BELT RETRACTOR	2004/05/...				mm			
U045919-B5-02-61320-WELD-121...	004.003	SPOT	U045919-...				mm			

Note:

1. Refer CAD data for other details. The Data is common for both variants 68P00 & 68P10. Consider the Child parts and Welding in the CAD data, as per above Part list.
2. For Brace, Side sill Inner 61314-68P00, Estimation is requested for both tool types of Progressive & Normal.



DRAWING FOR QUOTATION